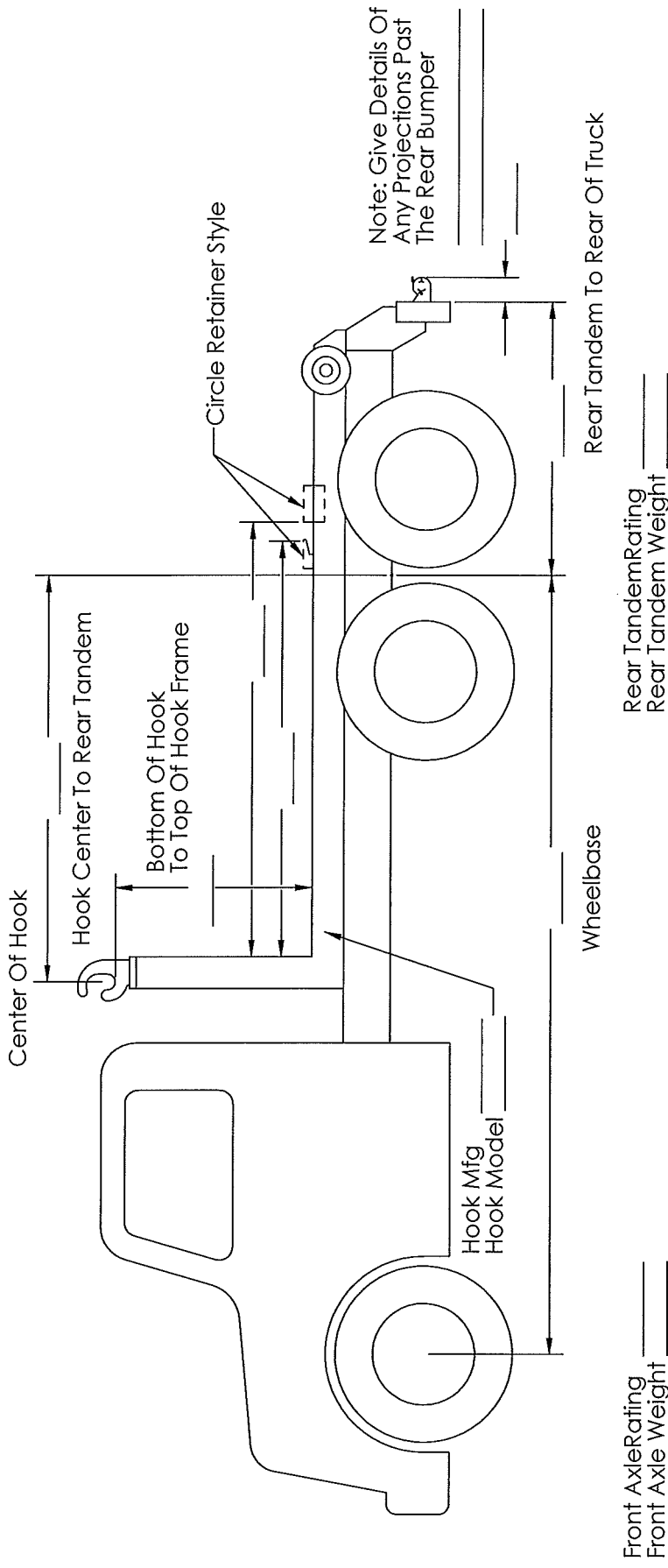


# TANDEM AXLE TRUCK INFORMATION SHEET

REV.	DESCRIPTION	DATE	APPR



<b>STEPP MFG</b> STEPP MFG. CO. INC. 12325 River Rd. North Branch, Mn. 55056 Ph. 651-674-4491 Fax 651-674-4221		TITLE: HOOK TRUCK INFORMATION	
NAME	DATE	PART NO.	REV
	10/27/2011	HOOK TRUCK TA 001	
DRAWN:	CREATED:	MATERIAL STOCK #	SCALE: 1:1
			WEIGHT:
MATERIAL TYPE:	REF#	DO NOT SCALE DRAWING	

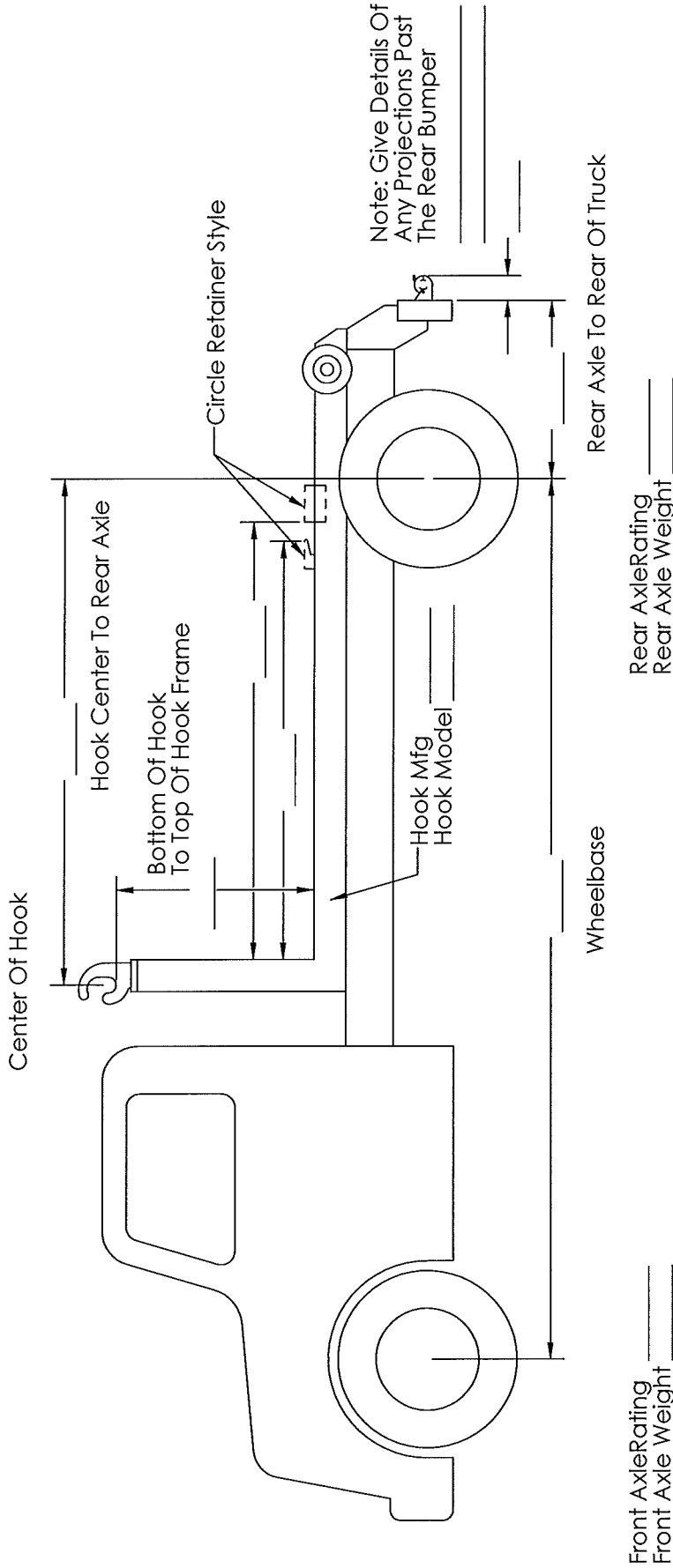
LOCK FORMER:	PROG #	TIP	SPEED	KERE	UNLESS OTHERWISE SPECIFIED: DIMENSIONS ARE IN INCHES
					TOLERANCES: FRACTIONAL: 1/16
BRAKE:	PROG #	DIE #	PUNCH #		ANGULAR: MACH: 1/2°
					BEND: ±1
SMALL:					THREE PLACE DECIMAL: ±0.010
					FOUR PLACE DECIMAL: ±0.005
LARGE:					FOUR PLACE DECIMAL: ±0.005

ROUTINGS		THICKNESS:
WEIDEMANN		
PROG #		
QTY-		

PROPRIETARY AND CONFIDENTIAL  
THE INFORMATION CONTAINED IN THIS DRAWING IS THE SOLE PROPERTY OF STEPP MFG. CO. INC. AND IS NOT TO BE REPRODUCED OR TRANSMITTED IN ANY FORM OR BY ANY MEANS WITHOUT THE WRITTEN PERMISSION OF STEPP MFG. CO. INC.

# SINGLE AXLE TRUCK INFORMATION SHEET

REV.	DESCRIPTION	DATE	APPR



<b>STEPP MFG</b> <small>STEPP MFG. CO. INC.</small>		<small>12325 River Rd. North Branch, Mn. 55056 Ph. 651-674-4491 — Fax. 651-674-4221</small>	
DRAWING NO.	NAME	DATE	TITLE
		10/17/2011	HOOK TRUCK INFORMATION
MATERIAL TYPE:		PART NO.	
		HOOK TRUCK SA 001	
MATERIAL STOCK #		SCALE: 1:1	
REF#		WEIGHT:	
		SHEET 1 OF 1	

LOCK FORMER:	PROG #	TIP	SPEED	KERF	UNLESS OTHERWISE SPECIFIED: DIMENSIONS ARE IN INCHES TOLERANCES: FRACTIONAL: 1/16 ANGULAR: MACHS 1/2°
BRAKE:		DIE #		PUNCH #	BEND #
SMALL:					THICKNESS PER ASME 10.4.4M STD.
LARGE:					
ROUTINGS					
WEIDEMANN PROG #					THICKNESS:

PROPRIETARY AND CONFIDENTIAL  
THE INFORMATION CONTAINED IN THIS DRAWING IS THE SOLE PROPERTY OF STEPP MFG. CO. INC. AND IS TO BE USED ONLY FOR THE PURCHASE OF STEPP MFG. PRODUCTS.

QTY-