



ASPHALT MAINTENANCE EQUIPMENT
651-674-4491 STEPPMFG.COM



Asphalt Maintenance Equipment Guide

 **79** Years
Of Asphalt Maintenance
Equipment Innovation
1942-2021



SPH GRAVITY DISCHARGE HOT BOX

Available in 1.5 (2ton), 2.0 (3ton) and 3.0 (4 ton) Cubic Yard

Stepp's SPH Gravity Discharge Hot Box design incorporates performance, durability, and versatility for your pothole patching needs. The SPH hot box has an air jacketed, gravity discharge system, and a stainless steel shovel platform, along with many other bolt on options.

Whether your goal is to keep your hot mix at temperature, warm up your cold patch, or reclaim asphalt, the SPH hot box will meet your needs.



Pothole Patching ... Asphalt Reclaiming...

SPHD

ASPHALT DUMP STYLE HOT BOX



SPHD DUMP STYLE HOT BOX

Available in 2.0(3ton), and 3.0(4ton) Cubic Yard

Stepp Mfg's dump style pothole patcher are used to heat and reclaim both hot mix and cold mix materials and apply them to roads, parking lots, and bridge decks to repair potholes and utility cuts. The SPHD dump style pothole patcher is offered with an oil jacketed, diesel fired heating system with a recirculating exhaust system to create a "Green Friendly" heating system. Coupling that with the market's lowest profile, 12,000# hydraulic truck hoist, and gas shock assisted top and rear doors, make this an industry leader that will give you a safe, reliable, and operator friendly machine for years to come.



Pothole Patching ... Asphalt Reclaiming...

SPH-OJ

ASPHALT AUGER STYLE HOT BOX



SPH-OJ OIL JACKETED AUGER ASPHALT HOT BOX

Available in 2.0(3ton), and 3.0(4ton) Cubic Yard

Stepp's SPH-OJ Oil Jacketed Auger Discharge Hot Box is powered by a Kubota diesel engine and a Beckett diesel burner system, and comes fully equipped with hydraulic top doors. Our oil jacketed design eliminates hot spots, while keeping hot mix and cold patch warm for hours.

The SPH-OJ has the features of a Cadillac and the toughness of a Peterbilt. If your roads demand repair, the SPH-OJ has what it takes for years of dependable and safe operations.



Pothole Patching ... Asphalt Reclaiming..

SMP ASPHALT MASTIC PATCHER

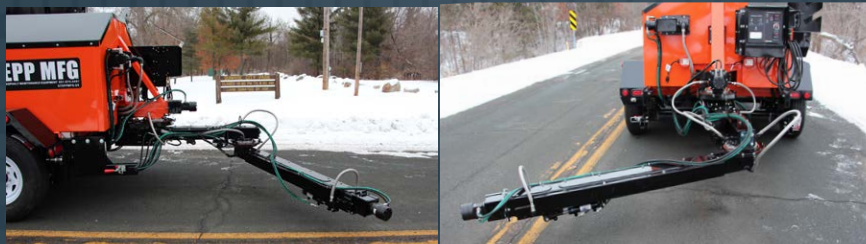


SMP MASTIC PATCHER

Available in 400 Gallon

The Stepp's SMP Mastic Patchers are designed to heat and apply mastic patch materials for crack filling, bridge deck transitions and deteriorated asphalt and concrete roadways. They are equipped with a 400 gallon tank, diesel heating systems with automatic temperature controls and Kubota Diesel engines. The heated mastic is applied to the crack or pothole by an oil jacketed discharge auger with hydraulic discharge gate. The 400 gallon capacity and higher oil jacketed temperature make the need for multiple machines a thing of the past.

The optional "double knuckle" placement auger allows for direct placement in the repair area making this the most innovative, safe and productive mastic machine in the industry.



Mastic Patching

SSPH

SLIP IN STYLE ASPHALT HOT BOX



SSPH HP SLIP IN STYLE ASPHALT HOT BOX

Available in 1.5 (2ton), 2.0 (3ton), 3.0 (4 ton), 4.0 (5.4ton) 5.0 (6.7ton) Cubic Yard

Stepp's SSPH HP slip in style asphalt hot boxes are designed to utilize your truck fleet to lower your overall asphalt repair cost and requires no special set up or truck dedication. The oil jacketed design , along with the diesel burner system, gives you the smoothest heating system and delivering you a consistent hot product day in and day out.



Pothole Patching ... Fleet Utilization...

SSPH HK

TRUCK AND HOOK MOUNTED ASPHALT DUMP HOT BOX



SSPH HK TRUCK AND HOOK ASPHALT HOT BOX

Available in 1.5 (2ton), 2.0 (3ton), 3.0 (4 ton), 4.0 (5.4ton) 5.0 (6.7ton) Cubic Yard

Stepp's SSPH HK Truck and Hook Mounted hot box are the perfect blend of durability, reliability, and operator simplicity. The SSPH HK takes charge of your demanding road maintenance needs. An optional compactor plate carrier, spoils bin, and air blowout options make this the ultimate patching body.

Stepp Mfg's SSPH HK asphalt pothole patching truck is used to heat and reclaim both hot mix and cold mix materials, and apply them to roads, parking lots, and bridge decks to repair pothole and utility cuts. The Stepp SSPH HK patching truck comes with an oil jacketed, diesel fired heating system, and a recirculating exhaust system to create a "Green Friendly" heating system that ensures good quality along with efficiency by evenly heating patch materials



Pothole Patching ... Asphalt Reclaiming...

SMM

TAILGATE ASPHALT RECYCLER



SMM MASTER MIX TAILGATE PUG MILL

Permanent Pothole repair in minutes...

Stepp's SMM Tailgate Mixer is a great solution for instant pothole repairs. The SMM will produce 1/4 ton of hot mix at 300° in minutes. Simply add millings or chunk asphalt into the hopper and in less than 10 minutes you are able to permanently repair your pothole.

The SMM is a fully self contained unit. It is powered by a Honda engine that drives the hydraulic system, along with a Beckett diesel burner.



Asphalt Recycling



SMMT

TRAILER ASPHALT RECYCLER



SMMT ASPHALT RECYCLER

Permanent Pothole repair in minutes... Hot asphalt for under \$20.00 a ton

Stepp's SMMT Trailer Mounted Asphalt Recycler is a great solution for instant pothole repairs. The SMMT will produce 500lbs of hot mix asphalt at 300-350° in minutes. Simply add millings or chunk asphalt into the hopper and in less than 10 minutes you are able to permanently repair your pothole.

Produce hot mix asphalt 24-7/365 days a year at any temperature. With the master mixer your repair is a one time repair, no more cold patch!



Asphalt Recycling



STPH

ASPHALT PATCH TRUCK



STPH ASPHALT PATCH TRUCK

Available in 4.0, 5.0, 6.0, and 7.0 Cubic Yard

Step's STPH Patch Bodies are the perfect blend of durability, reliability, and operator simplicity. The STPH takes charge of our demanding road maintenance needs. The optional on board tack tank system, compactor plate carrier, spoils bin, hydraulic jack hammer, and air blow out options make this the ultimate patch body. The oil jacketed diesel heating system ensures good quality along with efficient, smooth, and evenly heated patch materials. Couple that with the auger delivery system and you have the ultimate pothole patching machine.



Truck Mounted Pothole Patching

STPH HOOK

ASPHALT HOOK PATCH TRUCK



STPH HOOK MOUNTED ASPHALT PATCH TRUCK

Available in 4.0, 5.0, 6.0, and 7.0 Cubic Yard

Stapp's STPH Hook Style Patch Bodies have all of the great features of the chassis mounted units with the versatility of the hook lift system. With the rising costs of trucks, the hook lift system allows you to utilize your fleet for demands other than patching. The STPH Hook Style Patch Truck can be set up to accommodate any brand of hook lift system.



Hook Mounted Pothole Patching

OJK-V

ASPHALT CRACK SEALING KETTLE



OJK-V ASPHALT CRACK SEALER

Available in 75 & 125 Gallon

The Stepp OJK-V (Vertical) Kettle is trailer mounted and completely self contained. It is capable of heating, melting, and applying all grades of rubberized asphalt, crack sealer, joint sealants, and waterproofing compounds. The OJK-V is capable of heating sealing material from ambient temperature to application temperature in 60 minutes or less.

Optional equipment includes: 100CFM air compressor, auto loader, overnight heaters, and an on demand pumping system.



Rubberized Crack Sealing

OJK-H

ASPHALT CRACK SEALING KETTLE



OJK-H ASPHALT CRACK SEALER

Available in 185, 275, & 400 Gallon

The Stepp OJK-H (Horizontal) Kettle is used to melt rubberized crack sealing and water proofing compounds and apply them to road surfaces. The Stepp OJK-H is heavy duty construction and has the lowest loading height on the market, making it one of the safest crack sealing kettles.

Optional equipment includes: 100CFM air compressor, auto loader, overnight heaters, and an on demand pumping system.



Rubberized Crack Sealing

SGS

ASPHALT FLUE FIRED KETTLE



SGS ASPHALT KETTLE

Available in 180, 275, 360, & 580 Gallon

Stepp's SGS Flue Fired Kettles are designed to heat and apply various bitumen's (AC's and MC's) and emulsions for crack filling, spray tacking, and seal coating. They are to be equipped with your choice of propane or diesel heating systems with automatic temperature controls, and hydraulically powered pumping systems.



Asphalt Crack Filling and Tack Coating

SBF **ASPHALT BOTTOM FIRED KETTLE**



SBF ASPHALT KETTLE

Available in 200, 300, & 500 Gallon

Stepp's SBF Bottom Fired Kettles are designed to heat and apply various bitumen's (AC's and MC's) and emulsions for crack filling, tack coating, and seal coating. They are to be equipped with your choice of propane or diesel heating systems with automatic temperature controls and hydraulically powered pumping systems.



Asphalt Crack Filling and Tack Coating

SMT

ASPHALT MINI TANKER



SMT ASPHALT MINI TANKER

Available in 250, 400, 600, 1000, and 1200 Gallon

The Stepp SMT Mini Tanker is the perfect blend of performance and economy for your asphalt spraying maintenance needs and budget. Keep it simple with just the features you need. We will build the SMT Mini Tanker just the right size and with just the right options needed to give you maximum productivity with minimum expense. It all adds up to more profits in your pocket. Performance, Durability, and Versatility; that's what puts us a "Stepp" above the rest!



Emulsion Tack Coating and Storage

STRD

ASPHALT TRAILER DISTRIBUTOR



STRD TRAILER ASPHALT DISTRIBUTOR

Available in 600, 800, 1000, and 1200 Gallon

The Stepp STRD Trailer Mounted Asphalt Distributor is designed for spraying all types of asphalt emulsions and cutback type oils for tack coating and chip sealing operations. Our distributors come with 100 GPM pumping systems with an 8' spray bar or optional 12' spray bar. With powerful Kubota diesel engines and diesel burner options, you are sure to have the toughest, longest lasting distributor in the market.



Oil Distribution

SSF

STREET FLUSHER WATER TRUCK



SSF STREET FLUSHER WITH OPT ANTI ICING

Available In 2000 and 3000 Gallons

The Stepp SSF Street Flusher is not just any old water truck. The heated recirculation and hydraulically driven 750 GPM pumping system make it a year round truck. Whether it is flushing your streets, flooding your ice rinks, pre-wetting for sweeping, or flushing man-ways and catch basins, the Stepp SSF will get the job done. Don't forget to add the water cannon option to reach the hard-to-wash areas.

Optional integrated 3 lane anti-icing package from VariTech Industries adds versatility and reliability to your anti-icing programs.



Street Flushing... Ice Rink Maintenance... Anti-icing...

Stepp Manufacturing Co., Inc.

At Stepp Mfg. we specialize in manufacturing asphalt equipment designed to heat, melt, transport, and store bitumen and asphalt materials for highway maintenance, pothole repair, and parking lot maintenance such as crack sealing, pothole patching, and seal coating. In addition, we also manufacture storage tanks and kettles for heating roofing materials. The experience, history, and reputations of the company you purchase from are as important as the product itself. Stepp Mfg. Originated in 1942 and has operated continuously under the same family management since that time.

Our primary focus has always been on the design and manufacturing of heating and melting equipment for the highway and roofing industries. Our many years of experience have resulted in many innovations that make our products more efficient, productive, and safe. These innovations will continue as the needs of the industry change and as new technologies become available.

We utilize computer-aided designs and manufacturing processes that allow us to rapidly incorporate new technologies and improvements into our products. This gives you the most advanced technology available on the market today. With our full production facilities and in-house engineering department, we are able to custom build specialized equipment to your exacting specifications.

We employ certified welders, trained technicians, and engineers to assure the quality and dependability you would expect from your highway maintenance equipment. Our network of Dealers and After-Sales Service Support assure parts and services are available when and where you need it.

We would like to personally thank you for considering Stepp Mfg. in the purchase of your new equipment. For questions regarding new equipment, servicing existing equipment, or part replacement please call: 651-674-4491

The logo features a stylized orange graphic of three curved lines on the left, resembling a stylized 'S' or a series of overlapping arcs. To the right of this graphic, the number '79' is written in a large, bold, white font. Further to the right, the text 'Years Of Asphalt Maintenance Equipment Innovation' is written in a smaller, bold, white font, stacked in three lines. At the bottom of the logo, the years '1942-2021' are written in a bold, orange font.

79 Years
Of Asphalt Maintenance
Equipment Innovation
1942-2021

Stepp Manufacturing Company Inc
12325 River Road
North Branch, MN 55056



Visit our website at STEPPMFG.COM

